

January 2020

Greene Gab

Bloomfield-Eastern Greene County Public Library

Hello and Happy New Year to all of you lovely Greene Gab readers! It's the turn of the decade, and 2020 marks 7 years of Greene Gab! As we set our eyes towards another round of the roaring 20's, I want to thank everyone that reads this newsletter. It has been my greatest pleasure combining art and information for all of you to enjoy. More importantly, thank you to all the patrons who have continued to let us serve you over the years. Now, with the holiday craze at its end, please read on to see what we have planned for you this month!

Read Into Spring runs from January 2—March 21. I hope you've all prepared your stack of books to read, because Winter Reading is back! Receive weekly prizes, participate in weekly drawings, and enter for your chance to win the Grand Prize drawing at the end of the event! All you have to do is read. There are slips at the adult desk, and we look forward to the fun!

Homeschool Day at the Library continues this month with a snowball fight! How, you may ask? I suppose you'll have to stop in on Tuesday, January 14 to find out. More on page 2. Meanwhile, the Teen Room is starting the year off strong with candy, cookies, puzzles, and all of the usual fun. Check out page 4 for extensive program info!

If you have any questions, suggestions, comments, or concerns, we encourage you to contact us by phone (below) or by email at bloomfield@begcpl.info. We look forward to seeing you this month! We most certainly appreciate your patronage, and will continue to serve you as best we can. Stay warm, stay safe, and have a fantastic January!

Contents

Page 2—Adult Events

Page 3—Children Events

Page 4—Teen Events

Page 5—Eastern Events

Page 6—Bloomfield, IN...

Page 8—Contact Us



★
Happy
New Year!



www.begcpl.info



Greene County Literacy Coalition



812.384.4125



Bloomfield-Eastern Greene County Public Library

Homeschool Day at Your Library

Open to ALL Homeschooling Families

Tuesday, January 14

1:30 PM

in the Community Room!



SNOWBALL FIGHT!!!

JOIN US FOR THE MOST EPIC
SNOWBALL FIGHT

EVER!!!!!!



812-384-4125



CHILDREN'S PAGE

Preschool Storytime

will resume in February

Stay Warm!



TEEN EVENT PAGE

Teen Tuesday—Tuesday, January 7—3:30pm

Chat about your favorite books and movies, play awesome games, create cool crafts, and enjoy snacks! Share ideas and help plan library events that you want to attend!

Grades 7—12

Teen Movie Night—Thursday, January 9—4:30pm

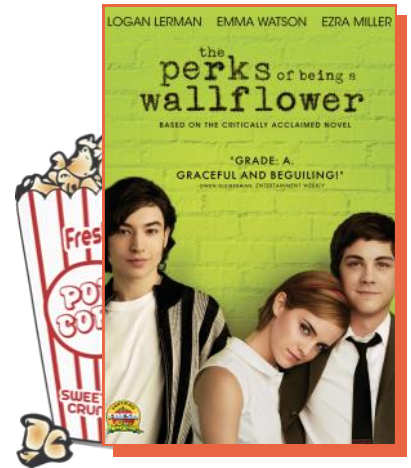
Spend an evening watching the movie *The Perks of Being a Wallflower*, rated PG-13. Snacks and soda will be provided.

Grades 7—12

A Gathering of Gamers—Thursday, January 23—3:30pm

Spend an afternoon playing your favorite games including board games, card games, and Wii games. Snacks and soda will be provided.

Grades 7—12

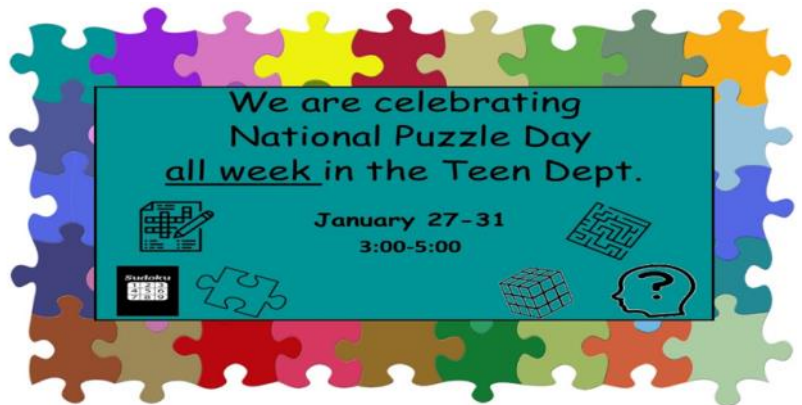


GUESS HOW MANY
January
for grades
5 - 12



We are celebrating
National Puzzle Day
all week in the Teen Dept.

January 27-31
3:00-5:00



LIKE COOKIES?



You're cordially invited to the

TEEN ROOM

Wednesdays -
January 8, 15, 22
3:00 - 5:00

EASTERN BRANCH

January

FAMILY FUN
Saturday ✨ ✨

YOUNG HOOSIER BOOK AWARD



Saturday, January 25

9:30 - 11:30

- **READ 5 WONDERFUL BOOKS!**
- **PICK YOUR FAVORITES**
- **MAKE CRAFTS!**

Bloomfield, IN...



BLOOMFIELD-EASTERN GREENE COUNTY PUBLIC LIBRARY
bloomfield.lib.in.us 812.384.4125

Have you ever wondered what it would be like to step back in time or revisit a certain period in time? With this article, I hope to feature a certain “anniversary” year (ending in “o” for 2020) each month and give you a glimpse at something happening in Bloomfield during that time. If you have a certain time period you’d like to see featured or know of a significant event that I should feature, make sure to send me an email (genealogy@bloomfield.lib.in.us) or stop by the library to have a chat, and ask for Kimberly! All of our featured happenings will also be on display in the Indiana Room so make sure to stop by the read the full article from the newspaper!

(January 1920)

Ring in the new year, let’s look back 100 years...

In 1920 people traveling throughout the Midwest knew of Bloomfield, Indiana on account of the concrete stave silos that were manufactured here. Once they were complete, the silo bared the name of the company and “Bloomfield, Indiana.” This helped to put Bloomfield on the map throughout the Midwest! Local farmers using these silos were known to be among the “most progressive and substantial agriculturalists of the county.” One local agent even made it his goal to sell over 100 of them throughout 1920!

The library would love to add a few pictures of these silos to our collection! If you know of anyone who might have a picture of one, please consider donating us a copy! Also make sure to stop by and read the entire article which you can find on display in the Indiana Room!

“Putting Bloomfield on the Map.” *The Bloomfield News*. [Bloomfield, IN], 15 January 1920, p. 1.

Friends Connection

Friends of the Library Corporate/Business Membership – Help us Offer More Online Databases!

Did you know that the Friends of the Library offers a corporate/business membership for area businesses and organizations at a price of just \$300/year? Enjoy the perks of being a Friends member year-round for all employees/officials, such as \$2 bags of items in our book sale year-round and early access to special sales at the library.

Corporate/business memberships can help the library add to the online databases that we are able to provide to those we serve. Thanks to a donation from Cook Group, Inc. the library went live with World Book Online in August 2017!

Membership cards will be given to any business or organization that joins the Friends of the Library to be distributed as needed. Interested in helping grow what we can offer here at the library? Fill out the membership application inside the newsletter or print and fill out an online form on our website: <http://bloomfield.lib.in.us/friends-of-the-library.html>

Shellie Zeigler, Library Director
Wendee Francis, FoL President

Book Sale Hours at the Library Annex

Tuesday 10:00am-01:00pm
Wednesday 10:00am-01:00pm
Thursday 01:00pm-04:00pm
1st Saturday each month 01:00pm-04:00pm

Friends of the Bloomfield-Eastern Greene County Public Library

Our goal is to promote awareness and use of the library by:
providing volunteer services, building on the community's financial support, and sponsoring cultural programs for the community.

To join Friends of the Bloomfield-Eastern Greene County Public Library, please complete the membership form below, and return it along with your dues to any circulation desk OR send it to:
Bloomfield-Eastern Greene County Public Library, Attention Friends Treasurer, 125 S. Franklin St., Bloomfield, IN 47424.
Please call the library at 812-384-4125 for any questions regarding memberships.

Membership Dues: (All memberships must renew annually, excluding life & veteran)

<u>Individual:</u> \$10.00	<u>Supporting:</u> \$25.00	<u>Corporate/Business:</u>	<u>Life:</u> \$500.00
<u>Family:</u> \$15.00	<u>Donor:</u> \$100.00	\$300	<u>Veteran:</u> \$0

New Membership: ____
Renewal: ____

Total Amount Paid: ____
Cash: ____ Check: ____ Date: ____

Please make checks payable to *Friends of Bloomfield Public Library*.

Contributions in excess of dues are always welcome and appreciated! Remember, all dues and contributions are tax deductible.

Name(s) _____

Email Address _____

Phone Number _____

Address _____

I would like to receive my monthly Greene Gab/Friends of the Library newsletter by:

Email ____ Pick Up in Library ____

I am available to work during the day to help Friends. YES NO

I am available to help provide snacks for library programs. YES NO

Friends of the Library Board

President - **Wendee Francis**
1st Vice President - **Priscilla Leibacher**
Treasurer - **Lillie Mae Baird**
Books for Babies - **Ingrid Fitch**
Art Show - **Wade Wallace**
Library Decorator - **Jane Lueking**
Book Sale - **Mary Anne Faudree**

Please feel free to contact any board member by leaving us a message with a librarian and we will return your call as soon as possible!

ITEMS WE ACCEPT FOR DONATION

- New and gently used books
- Audiobooks
- DVDs
- VHS tapes
- Puzzles with ALL pieces
- Music CDs
- Games in good condition

We request that if your item is damaged, in poor physical condition, or musty or moldy, that you take these items to the Recycling Center.

We DO NOT accept Reader's Digests, textbooks, or encyclopedia sets.

~Thank you!



Greene Gab

CONTACT US!

Bloomfield - Eastern
Greene County Public
Library

MAIN BRANCH

125 S. Franklin St.
Bloomfield, IN
Phone: (812) 384-4125
Fax: (812) 384-0820

EASTERN BRANCH

11453 E. Hwy 54
Little Cincinnati, IN
Phone: (812) 825-2677

Email: bloomfield@bloomfield.lib.in.us

Web: bloomfield.lib.in.us