



March 2020

Greene Gab

Bloomfield-Eastern Greene County Public Library

Hello Greene Gab readers! February was ever-so-short, and we're going full speed ahead to March. We have a lot of new content for all you lovely people, so read on and see what's happening!

During Bloomfield School's spring break, the library will be launching a weekly Minecraft event, where kids & teens of all ages & skill levels can indulge in Survival or Creative play in a fun and group-oriented environment. Check out page 2 for more info!

The Greene County Literacy Coalition will be having its 9th annual Wine & Cheese in the Stacks in April! We are very excited for this classic fundraiser to make its 2020 return. Check out the flyer on page 3 for more information!

If you have any questions, comments, or suggestions, we'd love to hear your feedback. Send us an email at bloomfield@begcpl.info or call the number below. Thank you and have a great March!



The Bloomfield Public Library has been awarded the ALL OF US Community Engagement Network Consumer Health Collection by the National Network of Libraries of Medicine.

This collection was on display in the adult department during February, and its contents are still waiting to be checked out!



www.begcpl.info



Greene County Literacy Coalition



812.384.4125



Bloomfield-Eastern Greene County Public Library

BLOOMFIELD-EASTERN GREENE COUNTY PUBLIC LIBRARY



MINECRAFT

CREATIVE

- Casual Building & Creation
- Learn the Basics of Redstone
- Use Infinite Resources
- Peaceful Difficulty

- Tuesdays- 3:30-5:00
- Grades 2-12
- Up to 4 Computers Provided

(feel free to bring your own)

SURVIVAL

- Build & Defend against Monsters -
- Learn to Farm, Fish, and Survive -
- Explore Alone or Together -
- Normal Difficulty -

- Wednesdays- 3:15-5:00 -
- Grades 5-12 -
- Up to 4 Computers Provided -

(feel free to bring your own)

GREENE COUNTY LITERACY COALITION'S 9TH ANNUAL



Wine & Cheese

— *in the Stacks* —

Saturday, April 4 6:00 - 8:00

\$15 - SINGLE

\$25 - COUPLE

SILENT AUCTION

ENTERTAINMENT

WINE & CRAFT BEER

FOOD

Homeschool Day at Your Library

Open to ALL Homeschooling Families

Tuesday, March 17

1:30 PM

in the Community Room!



BRINGING IN SPRING WITH SUNCATCHERS!

COME MAKE A SUNCATCHER!
ALL SUPPLIES PROVIDED!



812-384-4125





2020
MARCH

DISABILITY AWARENESS MONTH

371.9

Living with Hearing Loss

FEATURING COMPLETE INFORMATION ON:

- Common early signs of hearing loss
- Causes and kinds of hearing loss
- Hearing aids and other technology
- Cochlear implants and their potential
- Speechreading
- Tinnitus and how to deal with it
- Strategies for everyday situations
- Resources and related Internet sites

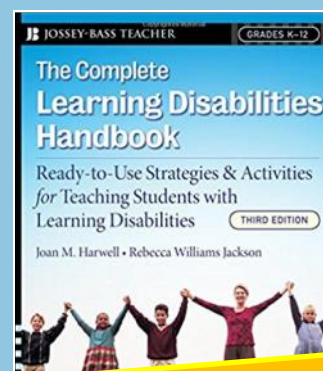
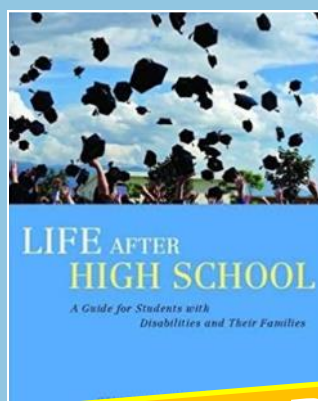
Marcia B. Dugan

Written in collaboration with

LIVING WITH LOW VISION

JUSTIN OLDHAM

EDITED BY
SUE ELLEN O'CONNOR, MS, CRC



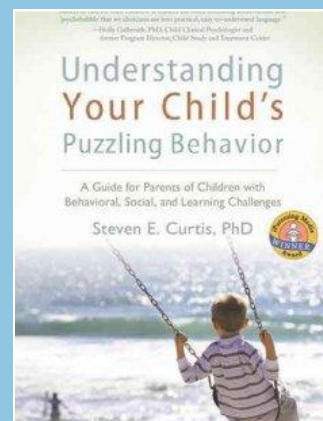
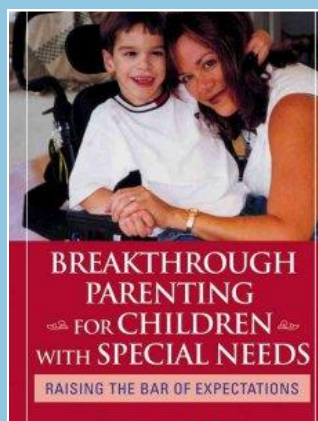
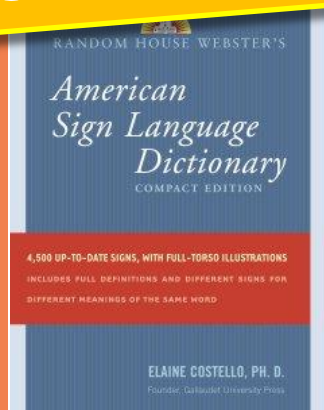
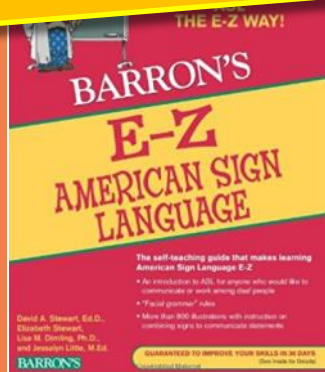
617

LIBRARY OPEN HOUSE

Thursday, March 19
6:30 - 7:30

- Dim Lighting
- Library Tour
- User-Friendly

649



419

CHILDREN'S PAGE

Celebrate

DR. SEUSS



at the library!



One Fish

Two Fish



Color a new fish



For our bulletin board

**The week of March 2, do a
Dr. Seuss scavenger hunt
and guess how many spots
are in the jar.**

kissclipart

TEEN EVENT PAGE

Teen Tuesday—Tuesday, March 3—3:30pm

Chat about your favorite books and movies, play awesome games, create cool crafts, and enjoy snacks! Share ideas and help plan library events that you want to attend!

Grades 7—12

Teen Movie Night—Thursday, March 12—4:30pm

Spend an evening watching the movie *Some Kind of Wonderful*, rated PG-13. Snacks and soda will be provided.

Grades 7—12

A Gathering of Gamers—Thursday, March 26—3:30pm

Spend an afternoon playing your favorite games including board games, card games, and Wii games. Snacks and soda will be provided.

Grades 7—12



**GUESS
HOW
MANY**



Grades 5-12

**LUCK O' THE
IRISH**

Mondays & Wednesdays

3:00 - 5:00

Roll the dice...

...win a prize!



**Tuesdays
3:00 - 5:00**



EASTERN BRANCH

March



March Story Times **Eastern Branch**



Wednesdays at 10:30 | 812-825-2677

11453 East State Road 54, Bloomfield, IN 47424

Frogs and Toads March 4

Turtles March 11

Rabbits March 18

Ducks and Chickens March 25



NOTE: If Eastern School is closed due to weather , the library will also be closed.



Friends Connection

Friends of the Library Corporate/Business Membership – Help us Offer More Online Databases!

Did you know that the Friends of the Library offers a corporate/business membership for area businesses and organizations at a price of just \$300/year? Enjoy the perks of being a Friends member year-round for all employees/officials, such as \$2 bags of items in our book sale year-round and early access to special sales at the library.

Corporate/business memberships can help the library add to the online databases that we are able to provide to those we serve. Thanks to a donation from Cook Group, Inc. the library went live with World Book Online in August 2017!

Membership cards will be given to any business or organization that joins the Friends of the Library to be distributed as needed. Interested in helping grow what we can offer here at the library? Fill out the membership application inside the newsletter or print and fill out an online form on our website: <http://bloomfield.lib.in.us/friends-of-the-library.html>

Wendee Francis, FoL President

Book Sale Hours at the Library Annex

Tuesday	Wednesday	Thursday	1st Saturday each month
10:00am-01:00pm	10:00am-01:00pm	01:00pm-04:00pm	01:00pm-04:00pm

Friends of the Bloomfield-Eastern Greene County Public Library

Our goal is to promote awareness and use of the library by:
providing volunteer services, building on the community's financial support, and sponsoring cultural programs for the community.

To join Friends of the Bloomfield-Eastern Greene County Public Library, please complete the membership form below, and return it along with your dues to any circulation desk OR send it to:

Bloomfield-Eastern Greene County Public Library, Attention Friends Treasurer, 125 S. Franklin St., Bloomfield, IN 47424.

Please call the library at 812-384-4125 for any questions regarding memberships.

Membership Dues: (All memberships must renew annually, excluding life & veteran)

Individual: \$10.00

Supporting: \$25.00

Corporate/Business:

Life: \$500.00

Family: \$15.00

Donor: \$100.00

\$300

Veteran: \$0

New Membership: _____

Total Amount Paid: _____

Renewal: _____

Cash: _____ Check: _____ Date: _____

Please make checks payable to *Friends of Bloomfield Public Library*.

Contributions in excess of dues are always welcome and appreciated! Remember, all dues and contributions are tax deductible.

Name(s) _____

Email Address _____

Phone Number _____

Address _____

I would like to receive my monthly Greene Gab/Friends of the Library newsletter by:

Email _____ Pick Up in Library _____

I am available to work during the day to help Friends. YES NO

I am available to help provide snacks for library programs. YES NO

Friends of the Library Board

President - **Wendee Francis**

1st Vice President - **Priscilla Leibacher**

Treasurer - **Lillie Mae Baird**

Books for Babies - **Ingrid Fitch**

Art Show - **Wade Wallace**

Library Decorator - **Jane Lueking**

Book Sale - **MaryAnn Faudree**

Please feel free to contact any board member by leaving us a message with a librarian and we will return your call as soon as possible!

ITEMS WE ACCEPT FOR DONATION

- New and gently used books
- Audiobooks
- DVDs
- VHS tapes
- Puzzles with ALL pieces
- Music CDs
- Games in good condition

We request that if your item is damaged, in poor physical condition, or musty or moldy, that you take these items to the Recycling Center.

We DO NOT accept Reader's Digests, textbooks, or encyclopedia sets.

~Thank you!



Greene Gab

CONTACT US!

Bloomfield - Eastern
Greene County Public
Library

MAIN BRANCH

125 S. Franklin St.
Bloomfield, IN
Phone: (812) 384-4125
Fax: (812) 384-0820

EASTERN BRANCH

11453 E. Hwy 54
Little Cincinnati, IN
Phone: (812) 825-2677

Email: bloomfield@bloomfield.lib.in.us

Web: bloomfield.lib.in.us